

IMPORTANT INFORMATION:

You will only be able to set up Spot Colours in your artwork if you are using design software (eg InDesign, Illustrator, Corel). Please **contact us** if you need help with setting up your artwork or if you would like us to design it for you.

How To Add Spot Colours To Your Artwork - InDesign

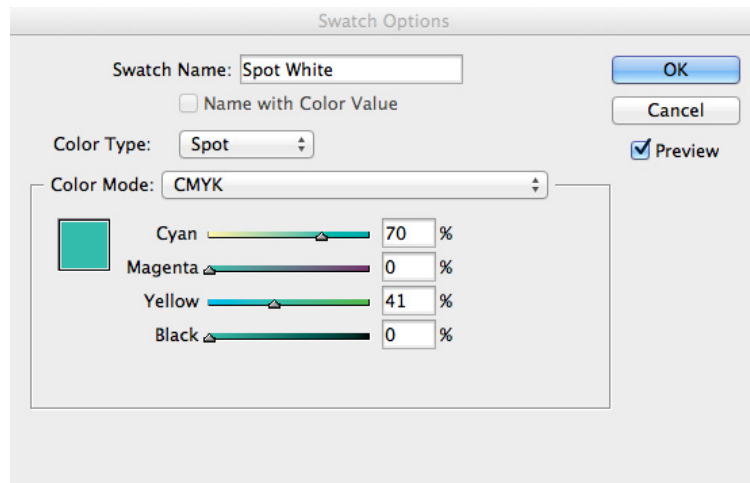
* Please note for the best result we recommend using spot colours at 100%

Spot White

To add spot white to your artwork, you will first need to create a new colour swatch.

- Select the area of your artwork that is to be printed in white ink
- Change it to the CMYK colour **70% cyan and 41% yellow**

This will allow us to see the area of your design that is to be in white, when we are checking your files for print. Please note, it will not print this colour, it will print white.

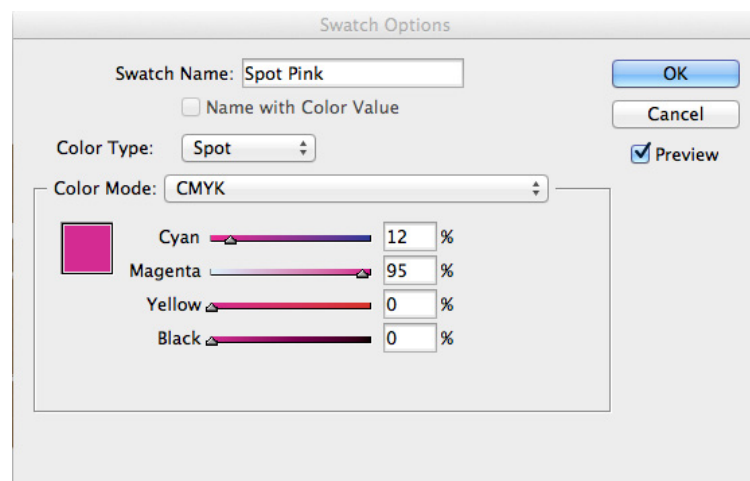


Spot Pink (Fluro)

To add spot pink (fluro) to your artwork, you will first need to create a new colour swatch.

- Select the area of your artwork that is to be printed in pink ink
- Change it to the CMYK colour **12% cyan and 95% magenta**

This will allow us to see the area of your design that is to be in pink, when we are checking your files for print.



Spot Orange (PANTONE 021C)

To add Spot Orange, or PANTONE 021C to your file, you will need to:

- Select the area of your file that is to be printed in **Spot Orange**
- Double click on the highlighted swatch in the swatch panel to open the swatch options (*Figure 1*)
- In the swatch options panel: for Color Type, select **Spot** (*Figure 1*)
- For Color Mode, select PANTONE Solid Coated (*Figure 2*)
- Select **PANTONE Orange 021C** (*Figure 3*)

Figure 1

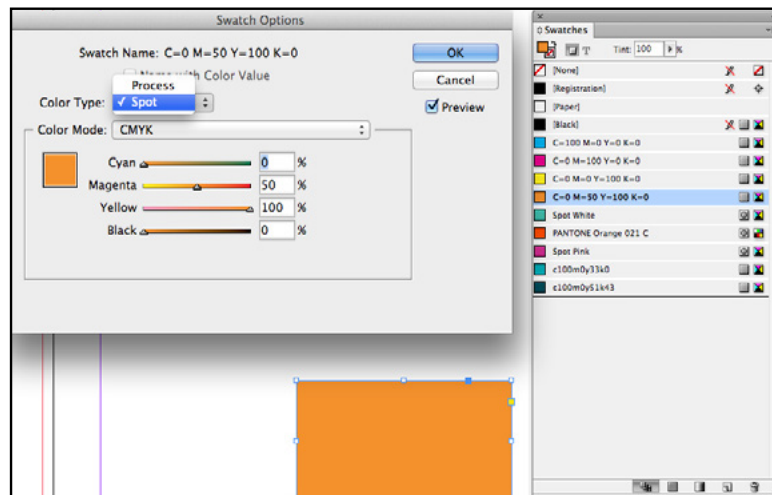


Figure 2

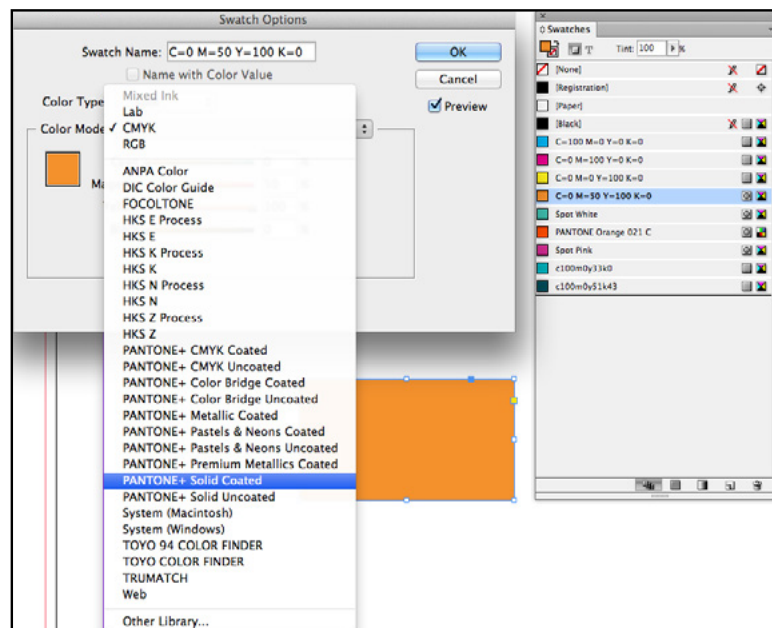
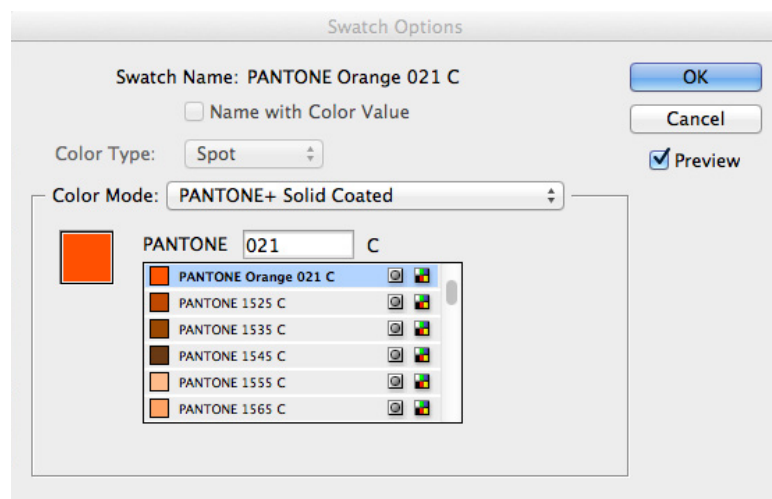


Figure 3



Using Spot White as a Base

Figure 4



Why use Spot White as a Base?

If you want your colours to appear vibrant when printed on Buffalo Card, you will need to use a spot white base placed beneath the coloured artwork. (Figure 4)

How to Set up your Artwork using Spot White as a Base

If you wish to use Spot White underneath and either CMYK or another Spot Colour over the top, you must first use the previous method to create the spot colours.

- Duplicate that element so it is in the exact same position as the original element
- Ensure that original/lower element is Spot White and the top element is the colour of your choice (Figure 5a and 5b)



Figure 5a



Figure 5b

- Set the top element (the colour you want to appear on top of the white) to overprint. **IMPORTANT** (Figure 6)

NOTE: If you do not set the top colour to overprint it will knock out the spot white beneath and the top colour will print directly on the buffalo board and will appear as in Figure 4 no base.

Setting Elements to Overprint

- In InDesign click on **Window > Output > Attributes**
- Select the object/s to be overprinted using your selection tool
- Click the box beside **Overprint Fill**

NOTE: to preview your overprinted elements in InDesign click on **Window > View > Overprint Preview**

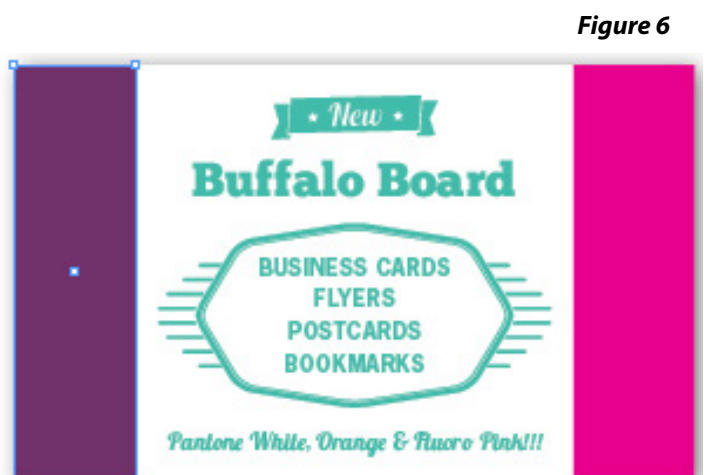
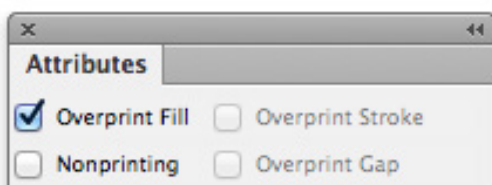


Figure 6